

2026 Summer Programs



Saint Louis Zoo
Animals Always®









NEW TO 2026: WildCare Park STEAM Camp and Adult Zoo Camp
Online Registration Only

Zoo Member Online Registration Opens: Tuesday, February 10, 2026 at 10 a.m.

General Public Online Registration Opens: Wednesday, February 11, 2026 at 1 p.m.

Visit stlzoo.org for more information.

Table of Contents

	Registration Information	3
	Career Programs.....	7
	<i>Participants entering 2nd through 8th grade. Adults can also register to attend. Registration open now! Visit the Tours Department website page for available dates and registration information: stlzoo.org/tours.</i>	
	Families.....	8
	<i>Families with children ages 5 and up</i>	
	Overnight and Private Programs.....	9
	Family Overnight Programs.....	9
	<i>Families with children ages 5 and up.</i>	
	Snooze at the Zoo:	
	Scout Overnight Programs.....	10
	<i>Cub Scouts and Girl Scout Brownies, Juniors and Cadettes.</i>	
	Private Overnight and Evening Programs.....	11
	<i>Families and organized groups.</i>	
	Adults	12
	<i>Adults ages 18 and up.</i>	
	Camp Programs.....	14
	<i>Children age 5 through children in 10th grade. Includes Camp Joey, Camp KangaZoo, Teen Camp, Specialty Camps and Camp Extended Care programs.</i>	
	Teachers.....	22
	Summer Outreach Programs.....	23

Saint Louis Zoo Mission

To conserve animals and their habitats through animal management, research, recreation and educational activities that encourage the support and enrich the experience of the public.

Photo Credits – Michael Abbene, Nebula Boever, Colin Dabbs, Ray Meibaum, JoEllen Toler, Robin Winkelman

Registration Information

Registration Information

Online Registration

Registration opens:

Zoo members on Tuesday, February 10, 2026, at 10 a.m.

General public on Wednesday, February 11, 2026, at 1 p.m.

Advance online registration is required for all programs. Registrations close when the program/camp is sold out OR:

- Three weeks prior to the start date for all camp programs.
- Two weeks prior to the start date for all other programs.

Zoo Members at the Family/Grandparent/Navigator level or higher receive a discount on program fees. We will continue to honor the Patron level membership benefit, including discount/early registration for Education Programs until the membership expiration date. If you would like to join, renew or upgrade your membership, please visit [Membership](#) or call (314) 646-4771, option #2. Membership benefits are non-transferable and intended for use by the individual household.

To help expedite the registration process, please review the registration information section on the website to see what information is needed at the time of registration.

Credit card payment is required for online registration. Zoo gift cards, coupons and checks are not accepted for online registration. Please visit stlzoo.org for detailed information on how to register online.

NOTE:

- Online registration only.
- Fax, email, phone, and walk-in registrations are not accepted.
- Participants must be of the appropriate age or grade level to attend the program.
- Participants can only register for one session of each program topic. Processing fees will apply for duplicate registrations, cancellations and/or transfers.

Who Can I Register?

- Yourself
- Immediate family members residing in the same household (spouse and children)
- Grandchildren (as general public registration or as part of your membership if you have a Family/Grandparent/Navigator membership level or above).

Zoo members are not eligible to use their early registration and discount to register extended family members, friends, neighbors, out-of-town guests, etc. These individuals must register themselves and their household members separately.



Registration Information

We reserve the right to cancel programs due to low enrollment or extenuating circumstances. Full refunds will be issued.

Queueing Software

Due to high program demand, we will utilize a queueing software to help manage high volume online registration. The goal is to reduce customer wait times and increase the number of customers served.

- Once you have entered the queue, do not refresh your browser, or you will lose your spot in the registration line.
- Register all children from the household prior to checking out/submitting your registration.
- Fees will apply when transferring to any other camp/program date.

CampDoc Camp Portal

- During registration, please enter the name of the parent/legal guardian (who has permanent legal guardianship, as it relates to health and legal decisions) as they will be required to complete the health-related information on the CampDoc parent portal system.
- CampDoc portal links will be sent out to camp participant's permanent parent or legal guardian approximately three weeks before camp program start date.

- Failure to complete this information could result in your camper not being able to attend camp, with no refund provided.

Online Registration Confirmation

You will receive a registration report by email as confirmation of your online registration. Please read the following information:

- Confirmed program dates and times.
- Special notes.
- Wait list information, if selected.
- Additional follow-up that may be required.

Wait List

For any camp/program choices that sell out, you can sign up to be on the wait list(s) while registering online. A payment is not required for the wait list. We will notify you by email/phone, and if you accept, payment will be required at that time. If you choose to decline an opening or do not respond by the deadline, you will be removed from that wait list.

Registration Information



Cancellations/Refunds and Transfers

To cancel or transfer registration, please contact the Education Department as soon as possible at (314) 646-4544, option #6. Advanced notice is required for all requests and transfers are subject to availability.

- Three weeks' notice required to cancel/transfer Camp Joey, Camp KangaZoo, Teen Camp, WildCare Park and Specialty Camps
- Two weeks' notice required to cancel/transfer all other programs
- **No refunds/transfers without the notice listed above**

Fees

- Cancellations - a refund of the registration fee minus 20% will be issued.
- Transfers - the fee is 20% of the registration fee and is due at the time of the request.

Participants may not make up or receive a refund for missed programs.

Important Illness Information and Protocols

No participant should attend any Zoo program(s) if they have experienced one or any combination of symptoms associated with illness within the last 24 hours. See the Illness Information and Protocols section on

the [Education Overview webpage](#). Changes to this policy will be updated as needed.

Inclusion Statement

We know that children of all abilities benefit when they play and learn together, and it is our goal that whenever possible they do so in our conservation education programs. Each individual program will determine the level of support needed for participation. Inclusion facilitators are available for intermittent support at our camp programs. However, if 1:1 support is required at school or in a public setting like the Zoo - where elopement risks are increased, and a 1:5 ratio is not sufficient for support and safety - we ask that families provide an aide with a verified background check.

Our goal is that every child has the opportunity to enjoy our programs with the appropriate supports needed for success. Our programs are developmentally appropriate for the set age range listed. We realize that sometimes developmental level does not correlate to chronological age. If this is the case, please reach out to us to determine the best placement for your child. Visit our Camp FAQ page for more information to help determine the best program for your child.

For more information, please email zooinclusion@stlzoo.org.



Registration Information

Medication Authorization Policy

For parents/adults registered to attend in-person programs with their child:

If your child needs to take medication during any in-person Zoo program, you are responsible for carrying the medication and monitoring your child's needs.

For camp programs, health and medical information will not be collected at the time of registration, but it will be required to be entered by the parent/legal guardian in the CampDoc parent portal system at a later date.



Parking for Programs

Parking is available on the Zoo's North Lot on Government Drive and the South Lot on Wells Drive for a fee. Zoo members can use their parking benefits. Limited street parking is available. Visit stlzoo.org for parking details and pricing.

Congestion on the streets in Forest Park can cause a delay in your arrival time. Please plan extra time so that you arrive on time for any in-person Zoo program.

Zoo Policy

Children under the age of 14 must be accompanied by an adult at all times on Zoo grounds. Parents of children under the age of 14: please plan to escort your child to class and then pick them up when their program is over. You will be asked to sign your child "in" and "out" before and after programs. All program participants will be accompanied by Zoo staff and/or Zoo volunteers during their program.

Terms and Condition/ Medical Consent

All participants and registrants must agree to the Saint Louis Zoo Claims Release and Medical Consent. By registering for or attending any Zoo program, you acknowledge and agree to the Zoo's Terms and Conditions and Medical Consent. You can find our Terms and Conditions at: stlzoo.org/education/education-registration.

Career Programs



Career Programs

Children attend these programs on their own or with an accompanied registered parent or other adult. All participants must be registered.

Registration open now through the Tours Department at stlzoo.org/tours.

Limited to four participants per session.

Fees are PER PERSON

Note: We do not recommend this program for participants with shellfish allergies. Please mention any latex allergies at the time of registration.

A Day with the Rays

For children entering 2nd - 8th grades. A parent or adult can register to accompany the participant.

Join the Saint Louis Zoo's team of keepers by participating in A Day with the Rays! As an aquatics keeper for the day, you will jump right in to help prepare diets and maintain the habitat to keep it looking nice and the animals healthy. As the new expert, you will help guests learn about our exhibit, how to touch and feed the stingrays, and touch the sharks.

Please wear a T-shirt, khaki or jean shorts, and old closed-toe shoes. Bring a bottle of water and a camera. A Saint Louis Zoo name tag, T-shirt and snack will be provided. Get wet, smell like fish and have a ton of fun with A Day with the Rays!

Advanced Day with the Rays

For children entering 2nd - 8th grades. A parent or adult can register to accompany the participant. Participants must have attended A Day with the Rays.

Dive deeper into the science and career of an aquatics keeper. In this second program, you will continue building your knowledge by participating with animal husbandry duties. Once the daily tasks are accomplished, you will explore fish and cephalopod biology, perform advanced marine water quality monitoring, and, of course, have some time for fun and games. It's time to show off all that you learned from last time as well as pick up a few new tricks along the way.

Please wear a T-shirt (your Day with the Rays shirt is a great choice), khaki or jean shorts, and old closed-toe shoes. Bring a bottle of water and a camera. A snack will be provided. Get wet, smell like fish and have even more fishy fun with Advanced Day with the Rays!

Visit the [Tours Department website](http://stlzoo.org/tours) page for available dates and registration information: stlzoo.org/tours.



Families

Families

For families with children ages 8 and up. A minimum of one adult must accompany the group. Fees are per registered participant.

Lifestyles of the Enriched and Famous

Walk the red carpet and meet some of the Saint Louis Zoo's most famous residents and get a glimpse into their fascinating lives. Share the celebrity gossip and see how we enrich the lives of all of our animals. The "A-list" is always changing so this tour is adjusted each year to meet new celebrities. This tour does not include touching live animals or access to non-public areas.

Limited to 20 participants

Fee: \$20 per person

June 16 (Tu); 1 – 2:15 p.m.



Overnight Programs



Family Overnight Programs

Children and adults attend these programs TOGETHER. All participating family members must be registered.

All overnights include an evening snack, guided night hike around Zoo grounds, continental breakfast and a souvenir cup.

Under the Sea-lion

For families with participants ages 5 and up.

Join us for this amazing opportunity to sleep inside the Sea Lion Sound tunnel! We will explore some of our aquatic life at the Zoo and around the world. We will end the night by laying out sleeping bags inside the tunnel. You will awake under the sea, and, hopefully, under a sea lion! The overnight includes a flashlight tour of Zoo grounds, an evening snack, a reusable cup and a continental breakfast in the morning.

Limited to 16 participants per session.

Instructors: Zoo Educators

Fee: Zoo Members \$75
General Public \$80

June 6-7 6:30 p.m. Sa – 8:30 a.m. Su

June 26-27 6:30 p.m. F – 8:30 a.m. Sa

July 11-12 6:30 p.m. Sa – 8:30 a.m. Su

July 31-Aug. 1 6:30 p.m. F – 8:30 a.m. Sa

Aug. 15-16 6:30 p.m. Sa – 8:30 a.m. Su

Sept. 11-12 6:30 p.m. F – 8:30 a.m. Sa

Snooze Around the World

For families with children ages 5 and up; one adult and one child minimum.

Whether your favorite continent is Africa or North America, we have a program for you. In this one-of-a-kind overnight experience, you will "visit" many different places around the world. We will take a close look at different animals from each continent and the issues affecting wildlife in the area. We will also learn what the Zoo is doing to help and even some things you can do to help these animals. So, pack your bags for a one-way tour of the whole world!

Overnight evening activities will include rotations through exciting activities, an evening pizza snack (with a soft drink), and a night hike around Zoo grounds. The morning portion of the overnight adventure includes a continental breakfast, a morning stroll around Zoo grounds to see the animals wake-up, a souvenir Zoo patch and glow-in-the-dark overnight cup!

Limited to 60 participants per session.

Instructors: Zoo Educators

Fee: Zoo Members \$55
General Public \$60

July 17-18 6:30 p.m. F – 8:30 a.m. Sa



Overnight Programs

Snooze at the Zoo: Scout Overnight Programs

Attention, scout leaders! In addition to family overnights, we have separate Snooze at the Zoo overnight programs for scouts. All participants and group leaders must be registered.

Snooze Around the World

Whether your favorite continent is Africa or North America, we have a program for you. In this one-of-a-kind overnight experience, you will “visit” many different places around the world. We will take a close look at different animals from each continent and the issues affecting wildlife in the area. We will also learn what the Zoo is doing to help and even some things you can do to help these animals. So, pack your bags for a one-way tour of the whole world!

Overnight evening activities will include rotations through exciting activities, an evening pizza snack (with a soft drink), and a night hike around Zoo grounds. The morning portion of the overnight adventure includes a continental breakfast, a morning stroll around Zoo grounds to see the animals wake-up, a souvenir Zoo patch and glow-in-the-dark overnight cup!

Limited to 60 participants per session.

Fee: \$55 per participant

For Girl Scout Brownies and their adult chaperones

June 13-14	6:30 p.m. Sa – 8:30 a.m. Su
July 10-11	6:30 p.m. F – 8:30 a.m. Sa
Aug. 1-2	6:30 p.m. Sa – 8:30 a.m. Su

For Juniors and their adult chaperones

June 20-21	6:30 p.m. Sa – 8:30 a.m. Su
July 18-19	6:30 p.m. Sa – 8:30 a.m. Su
Aug. 7-8	6:30 p.m. F – 8:30 a.m. Sa

For Mixed Troops and their adult chaperones

July 25-26	6:30 p.m. Sa – 8:30 a.m. Su
------------	-----------------------------

For Cub Scouts (Tigers through Webelos) and their adult chaperones

June 27-28	6:30 p.m. Sa – 8:30 a.m. Su
July 24-25	6:30 p.m. F – 8:30 a.m. Sa

The Snooze Registration Packet will be available on our website.

For more information on our Snooze at the Zoo Overnights, please contact the Overnight Staff at overnights@stlzoo.org.

Overnight Programs



Private Overnight and Evening Programs

Private Family and Group Overnight Programs

For families and organized groups with participants ages 5 and up.

You can schedule your own private group overnight during the summer on select evenings. When you schedule your own overnight, we use the themes we are currently offering, but we tailor them to meet your needs. Whether it's for a mixed-scout group, a family group or a summer camp, we have an overnight for you!

Family and Group Evening Night Hikes

For families with participants ages 5 and up, adults, and organized groups.

Ever wonder what the Zoo is like after it closes? Gather some family and friends and join us for this amazing opportunity to explore the Zoo at night! A Zoo educator will be the guide for your family to learn more about the animals.

You can schedule your own private group program on select evenings during the summer. Check our website for details on pricing and to submit a request form. For questions, please contact the Overnight staff at overnights@stlzoo.org.





Adult Programs

Adult Programs

For participants ages 18 and up. Some fees are per adult team.

Escape the Zoo: WildCare Institute Edition

Make your way around the Zoo, finding clues and solving puzzles as you learn all about the field work of our WildCare Institute. Discover the keys to saving species in Forest Park and around the world. Does your team have what it takes to support the WildCare Institute and escape before time runs out? Build your team of up to 10 individuals, ages 18 and up.

Limited to 10 participants per TEAM

Fees are PER TEAM. Maximum of three teams per session.

Fee: Zoo Members \$190
General Public \$200

April 14 (Tu); 5:30 – 7 p.m.

May 12 (Tu); 6 – 7:30 p.m.

June 9 (Tu); 6 – 7:30 p.m.



Escape the Zoo 2: Back to the Future Edition

Become a time traveler to solve the puzzles of the past and unlock the excitement of the future. It is a race against the clock, but the clock is generous, so take in the sights and sounds of the Zoo in this escape room-style adventure. Build your team of up to 10 individuals, ages 18 and up.

Limited to 10 participants per TEAM

Fees are PER TEAM. Maximum of three teams per session.

Fee: Zoo Members \$225
General Public \$245

April 21 (Tu); 5:30 – 7:30 p.m.

May 19 (Tu); 6 – 8 p.m.

June 23 (Tu); 5:30 – 7:30 p.m.

The Seasons of the Zoo

Come see the Zoo throughout the year. Each tour will highlight a different area and its seasonal happenings. See what the animals are up to each season and how we adjust our care throughout the year.

Limited to 20 participants

Fee: \$20 per person

April 18 (Sa); 10 – 11:15 a.m.

July 11 (Sa); 10 – 11:15 a.m.

Adult Programs



Adult Zoo Camp – NEW!

Ages 18 and up

Ready to feel like a kid again at Zoo camp? Now's your chance! Join Zoo Educators on a fun-filled, two-day, adults-only camp as you discover how the Zoo cares for animals here and around the world, as well as actions you can take at home. Activities may include going behind the scenes, riding the train, and chatting with Zookeepers to gain insider knowledge about the ins and outs of the Zoo. Bring your lunch and sense of adventure and we will provide a camp shirt!

*Our planned Adult Zoo Camp activities include frequent walking outdoors throughout the Zoo, up and down hills and steps, and in unpredictable weather.

Limited to 18 participants

Fee: Zoo Members \$175
General Public \$190

*There is no Zoo scholarship support available for Adult Zoo Camp.

June 17-18 W-Th 9 a.m. – 3 p.m.

July 27-28 M-T 9 a.m. – 3 p.m.

Sept 12-13 Sa-Su 9 a.m. - 3 p.m.





Camp Programs

Camp Program Information

The Saint Louis Zoo takes great pride in its camp tradition. Zoo camp programs are designed using best practices in environmental education, are developmentally appropriate and fun, and are led by trained educators. These camps are, however, not a part of a school program and therefore not licensed by the state department of elementary and secondary education.

Children attend these programs without their parent or caregiver. Zoo educators and volunteers facilitate these programs. To accommodate as many children as possible, you can only register for one session of each Camp topic.

Camp Inclusion Needs

Please visit our [Camp FAQ's](#) for more information about our inclusion services. If your camper has unique circumstances or support needs, please email zooinclusion@stlzoo.org with any questions or to provide support information.

Science Safety Contract

Some camp programs may include dissection or other lab activities, which will require parental or guardian consent to our Science Safety Contract at the time of registration.



Transportation Acknowledgement

Select camps may include transportation provided by Zoo staff in a vehicle to other sites, which will require parent or guardian consent at the time of registration.

Camp Scholarships

Camp scholarships are available for families with financial need. Call (314) 646-4544, option #6 or go to stlzoo.org/education for application materials.

Thanks to generous gifts from donors, the Saint Louis Zoo is pleased to announce scholarship opportunities for our educational summer camp programs. We would also like to recognize the generosity of AFB International for their support of the Zoo's inclusion initiatives.

Camp Joey -Animal Super Sleuths

For children age 5 - entering 1st grade

It's time to hop out of the pouch and into the exciting world of Animal Super Sleuths! Explore the mysteries of animals at the Saint Louis Zoo and beyond, using your dynamite detective skills! Search for clues about why animals live in certain habitats and learn how to help the animals in habitats near you! Our days will be filled with hands-on science and art experiences, exclusive tours, active games, songs and more! We'll also explore animal habitats through fun STEM challenges and play-based experiences, while having Zoo fun and learning to appreciate the animal world together.

Camp Joey T-shirt, group photo and snack included. Extra Camp Joey T-shirts can be purchased for \$15.

For more information about Camp Joey, please check out the FAQ page on our website: stlzoo.org/camp.

To accommodate as many children as possible, you can only register for one Camp Joey session per child. KangaCare, our extended care program, is not offered for Camp Joey.



Camp Programs



You will:

- Create amazing art
- Play active animal games
- Ride the Zooline Railroad
- Sing Zoo tunes
- Visit great Zoo habitats
- Do hands-on STEM activities
- And more!

Full-Day Sessions (Five Days)

Limited to 30 campers per session

Fee: Zoo Members \$355
General Public \$385

June 1-5	M-F	8:30 a.m. – 3 p.m.
June 8-12	M-F	8:30 a.m. – 3 p.m.
June 22-26	M-F	8:30 a.m. – 3 p.m.
July 6-10	M-F	8:30 a.m. – 3 p.m.
July 13-17	M-F	8:30 a.m. – 3 p.m.
July 20-24	M-F	8:30 a.m. – 3 p.m.
July 27-July 31	M-F	8:30 a.m. – 3 p.m.

Mini-Camp Week (Four Full Days)

Limited to 30 campers per session

Fee: Zoo Members \$284
General Public \$309

June 15-18	M-Th	8:30 a.m. – 3 p.m.
------------	------	--------------------

No Camp Joey on Friday, June 19 in honor of Juneteenth.



Camp Programs

Camp KangaZoo

For students entering 2nd - 6th grades

Explore the Zoo with caring counselors and new friends, meet the animals, and learn amazing things at Camp KangaZoo! Come year after year and learn something new each time. Campers will spend four amazing days and one awesome evening in small, age-specific groups for outdoor and indoor activities. The Camp KangaZoo exclusive Thursday evening program features all of the campers' favorite activities, including song time with our camp musician, a pizza dinner, camper skits and a night hike around the Zoo.

Camp KangaZoo T-shirt, group photo, snacks and Thursday pizza dinner are included. Extra Camp KangaZoo T-shirts can be purchased for \$15.

For more information about Camp KangaZoo, please check out the FAQ page on our website: stlzoo.org/camp. A detailed information packet will be sent in the spring.

To accommodate as many children as possible, you can only register for one session of each Camp KangaZoo topic session per child.

Animals in Action

Campers will explore the fascinating world of animal behavior. In-depth observations will reveal what animals do, how they move in their Zoo habitat, how they interact with other animals and how they learn. Active games, creative crafts, fun science activities and awesome Zoo animals will help uncover the mysteries of animals in action.

Fee: Zoo Members \$295
General Public \$320

June 8-11 June 11	M-Th Th	8:30 a.m. – 3 p.m. 6 – 10 p.m.
----------------------	------------	-----------------------------------

June 15-18 June 18	M-Th Th	8:30 a.m. – 3 p.m. 6 – 10 p.m.
-----------------------	------------	-----------------------------------

June 22-25 June 25	M-Th Th	8:30 a.m. – 3 p.m. 6 – 10 p.m.
-----------------------	------------	-----------------------------------

July 6-9 July 9	M-Th Th	8:30 a.m. – 3 p.m. 6 – 10 p.m.
--------------------	------------	-----------------------------------

July 13-16 July 16	M-Th Th	8:30 a.m. – 3 p.m. 6 – 10 p.m.
-----------------------	------------	-----------------------------------

July 20-23 July 23	M-Th Th	8:30 a.m. – 3 p.m. 6 – 10 p.m.
-----------------------	------------	-----------------------------------

July 27-30 July 30	M-Th Th	8:30 a.m. – 3 p.m. 6 – 10 p.m.
-----------------------	------------	-----------------------------------

Aug. 3-6 Aug. 6	M-Th Th	8:30 a.m. – 3 p.m. 6 – 10 p.m.
--------------------	------------	-----------------------------------

Camp Programs



Teen Camp – Animals in Action

For students entering 7th - 9th grades

Too old for Camp KangaZoo? Then you're ready for Teen Camp, an awesome summer adventure for teens! Teen Camp combines all of the best aspects of camp – fun, friends, music, crafts, skits, live animal encounters and awesome counselors – with more in-depth information about Zoo animals and conservation. The theme for Teen Camp is Animals in Action.

Teen Camp includes a unique overnight experience at the Zoo on Thursday night! Extra Teen Camp T-shirts can be purchased for \$15.

For more information about Teen Camp, please check out the FAQ page on our website: stlzoo.org/camp.

A detailed information packet will be sent in the spring. To accommodate as many children as possible, you can only register for one Teen Camp session per child.

Limited to 18 campers per session.

Fee: Zoo Members \$325
General Public \$355

June 8-11 June 11-12	M-Th Th-F	8:30 a.m. – 3 p.m. 6 p.m. – 8:30 a.m.
-------------------------	--------------	--

June 22-25 June 25-26	M-Th Th-F	8:30 a.m. – 3 p.m. 6 p.m. – 8:30 a.m.
--------------------------	--------------	--

July 6-9 July 9-10	M-Th Th-F	8:30 a.m. – 3 p.m. 6 p.m. – 8:30 a.m.
-----------------------	--------------	--

July 13-16 July 16-17	M-Th Th-F	8:30 a.m. – 3 p.m. 6 p.m. – 8:30 a.m.
--------------------------	--------------	--

July 20-23 July 23-24	M-Th Th-F	8:30 a.m. – 3 p.m. 6 p.m. – 8:30 a.m.
--------------------------	--------------	--

Each year, the Saint Louis Zoo provides scholarships to local, under-resourced students so they can attend our camp programs. Would you consider a personal or company gift to help kids experience camp? Please contact Amy Zentgraf Ferguson at (314) 646-4569 or at azentgraf@stlzoo.org to make your charitable gift today. Thank you for your support of the Zoo!





Camp Programs

Specialty Camps

Specialty Camps are a uniquely different experience from Camp KangaZoo, in that each different title is an in-depth exploration of a specific topic. Smaller camp groups enjoy a balance of indoor classroom learning with plenty of outside exploration time.

Participants should bring a lunch, snack, and water bottle each day and dress for the weather.

There is NO Thursday evening event, song time, or skit time with any Specialty Camp title. KangaCare PM is available on select weeks for an additional fee.

Specialty campers will receive one camp T-shirt. Extra T-shirts can be purchased for \$15.

To accommodate as many children as possible, you can only register for one session of each specialty camp topic per child.

Amazing Animals Around the World

For students entering 4th - 5th grades

Explore the world at the Saint Louis Zoo. In this four-day journey around the globe, you will learn about animals in each continent and what it takes to survive where they live. Every day will bring you a new adventure into a different part of the world. From the desert to the Arctic, we will explore these areas and what animals

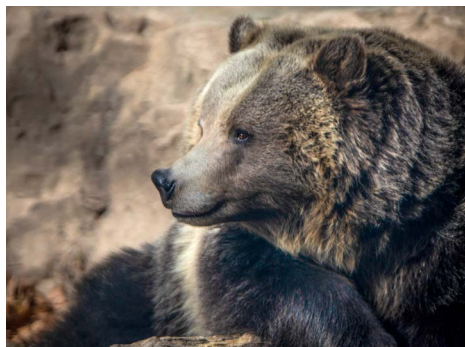
live there. You won't believe what we can learn from the animals all over the world!

Limited to 16 participants per session.

Fee: Zoo Members \$290
General Public \$315

July 27-30 M-Th 9 a.m. – 3:30 p.m.

Aug 3-6 M-Th 9 a.m. – 3:30 p.m.



Powerful Predators Camp

For students entering 5th-6th grades

Explore the vital role predators play, from the wilds of Missouri to the African savanna. Through hands-on activities and observing animals at the Zoo, we will uncover secrets of the animal kingdom and work together to identify a mystery predator that calls the Saint Louis Zoo home!

Limited to 16 participants per session.

Fee: Zoo Members \$290
General Public \$315

June 22-25 M-Th 9 a.m. – 3:30 p.m.

July 6-9 M-Th 9 a.m. – 3:30 p.m.

Camp Programs



STEAMZ

For students entering 6th-7th grades

Full STEAMZ ahead! With a focus on animal care and conservation, campers will experience Science, Technology, Engineering, Art and Math, all through a Zoo perspective. Join us this summer for hands-on exploration, behind-the-scenes discoveries and citizen science opportunities!

Limited to 16 participants.

Fee: Zoo Members \$290
General Public \$315

June 1-4 M-Th 9 a.m. – 3:30 p.m.

*No KangaCare PM is available this week

June 8-11 M-Th 9 a.m. – 3:30 p.m.

Streams to Seas

For students entering 7th and 8th grades

Discover how animals from giant polar bears to tiny frogs rely on water, the Earth's most important natural resource. Join us to learn about aquatic Zoo animals, dissect a squid, and do off-site field work (weather permitting). From the streams of Missouri to the world oceans, this camp dives into real-world conservation actions we can all do to make a difference.

*This new offering is adapted from past marine biology camps.

Limited to 16 participants per session.

Fee: Zoo Members \$290
General Public \$315

July 13-16 M-Th 9 a.m. – 3:30 p.m.

July 20-23 M-Th 9 a.m. – 3:30 p.m.





Camp Programs

Camp Extended Care

KangaCare PM

An after-care program for Camp KangaZoo, Teen Camp and Specialty Camp participants. KangaCare PM is not available for Camp Joey or for camps taking place at WildCare Park.

KangaCare PM: During this after-care program, campers will enjoy activities building on their camp experience. Campers will visit an area of the Zoo each day and then have indoor activities until pick-up. KangaCare PM is offered until 6 p.m., Monday through Thursday.

KangaCare PM is limited to 24 campers per session.

Fee: Zoo Members \$90
General Public \$95

June 8-11 M-Th 3 – 6 p.m.

June 15-18 M-Th 3 – 6 p.m.

June 22-25 M-Th 3 – 6 p.m.

July 6-9 M-Th 3 – 6 p.m.

July 13-16 M-Th 3 – 6 p.m.

July 20-23 M-Th 3 – 6 p.m.

July 27-30 M-Th 3 – 6 p.m.

Aug. 3-6 M-Th 3 – 6 p.m.

Adult Zoo Camp – NEW!

Ages 18 and up

Ready to feel like a kid again at Zoo camp? Now's your chance! Join Zoo Educators on a fun-filled, two-day, adults-only camp as you discover how the Zoo cares for animals here and around the world, as well as actions you can take at home.

See our Adult Programs page for more information!



WildCare Park Camp

This Camp takes place at WildCare Park in Spanish Lake, Monday through Friday. Campers will get a sneak peek of WildCare Park, opening to the public in 2027.

Participants should bring a lunch, snack, and water bottle each day and dress for the weather.

Campers will receive one camp T-shirt. Extra T-shirts can be purchased for \$15.

You can only register for one session of WildCare Park Camp per child.



Camp Programs



WildCare Park STEAM Camp – NEW!

For students entering 9th and 10th grades

Be part of history and join us at the very first summer camp at WildCare Park! Experience first-hand what it takes to care for animals and protect wildlife while exploring the wide range of STEAM work that makes conservation possible. Through hands-on projects, outdoor challenges, and behind-the-scenes tours, campers will discover how STEM shapes the future of conservation and will begin to imagine their own path in it. Campers will be transported in Zoo vehicles to various locations around WildCare Park.

Limited to 14 participants per session.

Fee: Zoo Members \$325
General Public \$350

June 8-12 M-F 8:30 a.m. – 3 p.m.

June 22-26 M-F 8:30 a.m. – 3 p.m.

July 6-10 M-F 8:30 a.m. – 3 p.m.

*No KangaCare PM is available for any week of WildCare Park STEAM Camp.



Teachers

Teachers

Professional development
and resources for teachers

2026 Sustainability Institute for Educators

A three-day workshop for educators of all backgrounds. Learning locations include the Saint Louis Zoo, Missouri Botanical Garden, and Webster University.

June 15-17 (M-W)

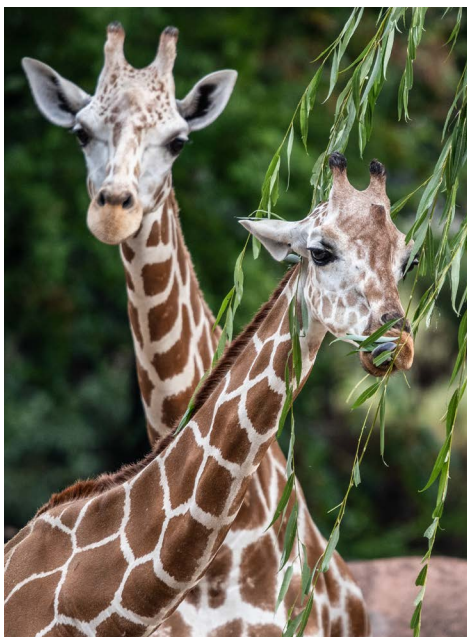
Visit webster.edu/sie for specific details and to register. Graduate credit and scholarship may be available.



Library and Teacher Resource Center

Summer is a great time to come in and explore resources available at the Zoo. The Saint Louis Zoo Library and Teacher Resource Center houses a diverse array of materials for use in the classroom. Loan materials include DVDs, curriculum guides, activity books and classroom kits. Over 5,000 books on zoology and conservation are available for reference. Please call (314) 646-4555 for an appointment.

Proceeds from the Guerrero Family Zoo Resource Fund help support the Zoo's Library and Teacher Resource Center.



Outreach Programs



Summer Outreach Programs

Let the Saint Louis Zoo Come to You!

The Zoo is pleased to offer 45-minute outreach programs that can be presented at your site. We provide educational programs for ages 3 and up, including programs at schools, libraries, senior living homes, scout groups, day cares, camps and other community organizations. Please visit our website at stlzoo.org/outreach for more information about group sizes, program titles and descriptions, program costs, and more.

Looking to enhance your summer school or camp curriculum at your location?

The Zoo can offer week-long engaging, hands-on activities, for 1-2 hours per day (length depends upon program title selected) at your site. Programs are developmentally appropriate for age groups: 6-8 years, 9-11 years, or ages 5+ with special needs. Price is \$1400-\$1500 per week. Please reach out to outreachrequests@stlzoo.org for more information.

Virtual Content

The Saint Louis Zoo has a wide spectrum of virtual content, both live and on-demand!

Visit our website at stlzoo.org/education/virtual-programs to learn more about interactive distance learning programs that meet learning standards, enriching virtual field trips and even how groups can interview a Zoo expert.

If you are looking for pre-recorded content available any time, we invite you to visit onlinelearning.stlzoo.org to view videos featuring stories about our Zoo animals, how-to animal crafts and more.

The Saint Louis Zoo is grateful to receive support for its Virtual Programs from the Tilles Foundation.



**Online registration
opens in February.
See the registration
information on pages 3-5.**

Scan to register.



Saint Louis Zoo
Animals Always®