

# Lantern Display Checklist

- 9 Sons of the Dragon
- African Elephants
- African Lions
- Albatrosses
- Anteaters
- Armadillo, Flamingos, Ring-Tailed Lemur
- Beetles
- Bird Pathway
- Bluebonnet Flowers and Flower Bed
- Butterfly and Clover
- Carved Clematis
- Caterpillar
- Cheetahs
- Chinese Dragon Tunnel
- Chinese Lantern Tunnel
- Chinese Zodiac
- Crocodiles
- Iridescent Dome\*
- Dragonfly
- Flower Chairs\*
- Forest Gate (at North Entrance)
- Frog\*
- Giant Panda\*
- Goldfish Gate (in South Lot)
- Goldfish Pond
- Grasshopper\*
- Hippos
- Hummingbird and Bees\*
- Hybrids
- Komodo Dragons
- Lightwave Drums\*
- Lotus
- Lotus Tunnel
- Moonlight Swings\*
- Narwhal
- Orchids
- Polar Bears
- Prairie Dog
- Puffins
- Python
- Seesaws\*
- South Polar Skua
- Spectacled Bear, Llama, Ocelot
- Starry Tunnel\*
- Talking Parrots\*
- Tarantula
- Toucans
- Chinese Lantern Palace
- Vultures
- Warthog
- Wasp
- White Snake
- Xylophone Instruments\*

\*Denotes interactive display

**MAKE TRACKS**  
THROUGH  
THE  
**ZOO**



**40** YEARS & RUNNING

presented by St. Louis Children's Hospital

**Sunday, May 18, 2025**

**ROMEO & ZOOLIET**



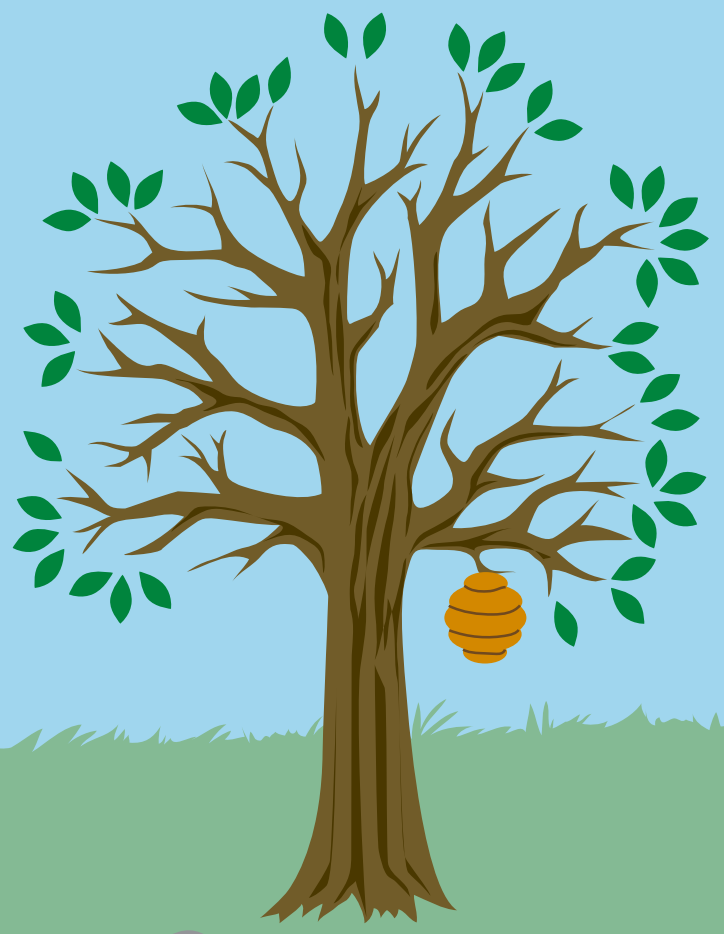
A WILD NEW PLAY

**Tuesday through Sunday evenings:  
July 8 – Aug. 17, 2025**

**Check out our upcoming events!**



Help us make biodiversity shine bright!



Learn how you can help keep the species that live by you diverse by creating a healthy habitat where you live! Visit each of our four education stations and you'll receive stamps for your "yard" (pictured above).

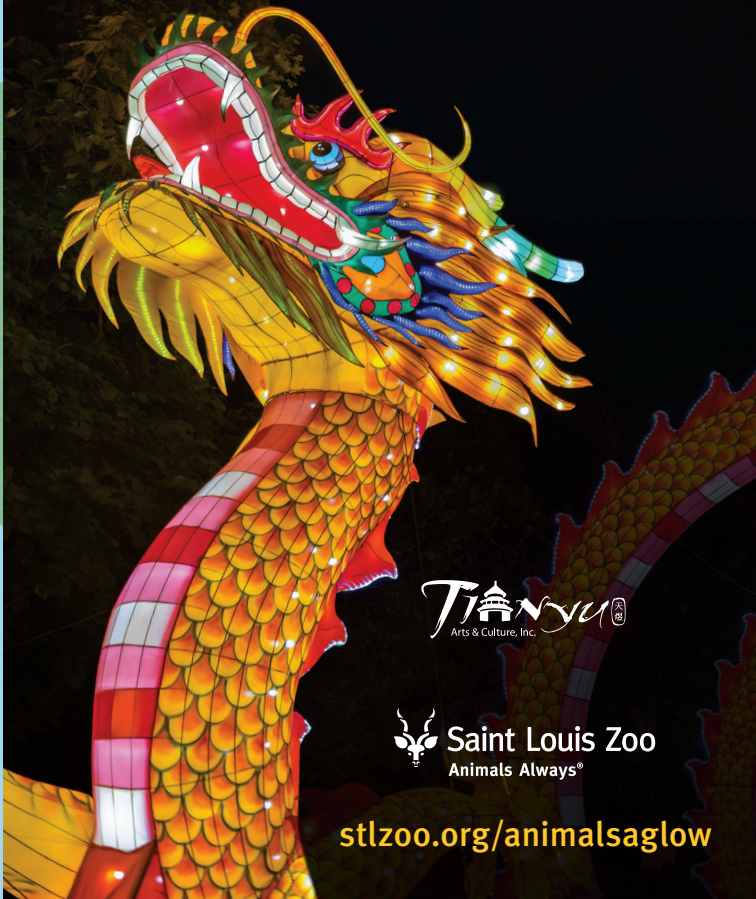


**ANIMALS AGLLOW**

Lantern Festival  
presented by Wells Fargo

**The best memories are the brightest.**

Wednesdays through Sundays,  
March 12–May 11



[stlzoo.org/animalsaglow](http://stlzoo.org/animalsaglow)





Cultural Performances

## Event Activities

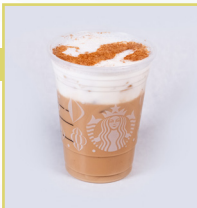
- 1** Enjoy cultural performances, available nightly  
*Included in admission; showtimes at 7, 7:45 and 8:30 p.m.*
- 2** Check out cultural handicrafts for purchase
- 3** Ride the Zooline Railroad, open Fridays through Sundays (weather permitting)  
*\$3.95 (Zoo member), \$4.95 (non-member); open until 9 p.m.*
- 4** Take a spin on the Conservation Carousel, open nightly  
*\$1.95 (Zoo member), \$2.95 (non-member); open until 9:30 p.m., 10 p.m. on select nights*
- 5** Wild Explorer Virtual Reality Experience  
*\$5 per person; open until 9:30 p.m., 10 p.m. on select nights*



**PLEASE NOTE:**  
For your safety,  
please do not cross  
marked barriers, nor  
climb on or touch the  
lanterns.

**Note:** Animals will not be viewable,  
and no animal buildings will be  
open during this event.

- Specialty Menu Items**
- Carousel Cafe**
    - Chicken Kushiyaki
    - Crab Rangoon with Sweet Chili Sauce
    - Lychee Martini\*
    - Tsingtao Premium Lager\*
  - Ice Cream Oasis**
    - Taiyaki Ice Cream
  - Lakeside Cafe**
    - 16oz. Yuzu Margaritas and Singapore Slings\*
    - Asian Pork and Vegetable Dumplings in Aromatic Broth
    - Firecracker Chicken served over White Rice
    - Sapporo Beer (Draft)\*
  - River Camp Cafe**
    - Bao Pork Buns
    - Crispy Asian Chicken Wings
  - Reptile Redwood**
    - Craft Asian Beer\*
  - Starbucks**
    - Year of the "Snake-rdoodle" Latte
  - Tundra Treats**
    - Assorted Saki\*
    - Dragon Fruit ICEE
    - Veggie Egg Rolls with Chili Sauce
- \*For adults 21+*
- Gift Shops**  
Receive 10% off your purchase  
(20% for Zoo members)
- Education Stations**  
Stop at each station and talk with a Zoo educator about how you can help biodiversity shine bright! Our educators will stamp your activity panel on the back of this program.
- Interactive Lantern Area**
- Walk-Through Lantern Corridors**
- A** Dragon
  - B** Chinese lanterns
  - C** Lotus
  - D** Animals
  - E** Birds



Thank You to our Sponsors:

