

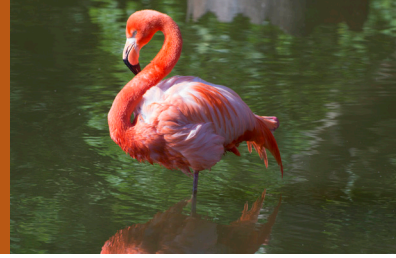
Exploring the Saint Louis Zoo Scavenger Hunt

Grades 4 - 8



Saint Louis Zoo
Animals Always®

Exploring the Saint Louis Zoo Scavenger Hunt



Teacher's Guide

Updated: Summer 2021

Approximate Time: 90 – 120 Minutes

Suggestions for teachers

1. The activities take you through a large portion of the Saint Louis Zoo. Make sure your students are familiar with the Zoo layout or have a map.
2. Divide your students into groups of five or fewer students with an adult.
3. Make sure everyone has comfortable walking shoes, and remind them to dress appropriately for the weather.

Suggested Pre-Visit Activities

1. Review these pages ahead of time with your students so they will have an idea of what they will be doing at the Zoo.
2. Be sure that your students are familiar with the concepts of rainforest, endangered species, and adaptation.

Resources

1. Zoo website: stlzoo.org
2. Live Zoo webcams: stlzoo.org/webcams

Answer Key

Because the animals at the Zoo are living creatures with very special needs, at certain times some of the animals referred to in this scavenger hunt may not be on public display. Please remind your students to do their best to complete the hunt by carefully observing the animals they find and not to worry about any that are off display. We update our scavenger hunts on an annual basis during the summer months to be able to provide you with the most accurate information about our animals.

Approximate Time: 90 Minutes (Updated: 2021)

1. They walk on the bottom of the stream bed.
2. Osage copperhead, western cottonmouth, timber rattlesnake, prairie massasauga rattlesnake, western pygmy rattlesnake
3. The shell is a honeycomb design, which makes it lighter for the tortoise to carry.
4. Turtles, caimans, birds and mammals
5. Central Africa
6. The picture should show the spider monkey using its prehensile tail.
7. Madagascar
8. A.) Lion, Africa, yes B.) Snow leopard, Asia, yes C.) Amur tiger, Asia, yes D.) Amur leopard, Asia, yes, E.) Jaguar, North & South America, yes
9. B
10. D
11. A
12. B
13. Males are dark brown and bigger; females are tan and smaller
14. Exists only in breeding facilities in Guam and zoos
15. Extinct in the wild
16. Potential answers include: roseate spoonbill, egret, bufflehead, ibis, double-breasted cormorant, ruddy duck, wood duck and other species that thrive in cypress swamps along the Mississippi River
17. Answers will vary, but there should be three
18. Answers are in the form of movements but will resemble movements of chimpanzee, gorilla or orangutan



Exploring the Saint Louis Zoo Scavenger Hunt



Student Activity Pages

Remember to look at the informational signs near each exhibit to help you answer the questions.

Start your scavenger hunt at the Herpetarium

Herpetarium

1. Hellbenders don't swim while in water. How do they move through the water?

2. Name three venomous snakes of Missouri.

1.

2.

3.

3. What is unique about the Galapagos tortoise shell?

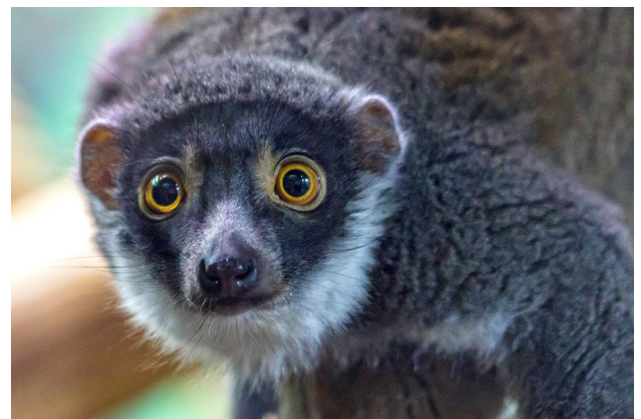
4. Anacondas hunt both in and out of the water. What are TWO examples of the prey they hunt?

Exit the front of the Herpetarium and go to your right. The next building is the Primate House, connected to Primate Canopy Trails.

NOTE: On any given day, the animals have the choice to be inside or outside. Make sure to look for the animals both inside and outside.

Primate House/Primate Canopy Trails

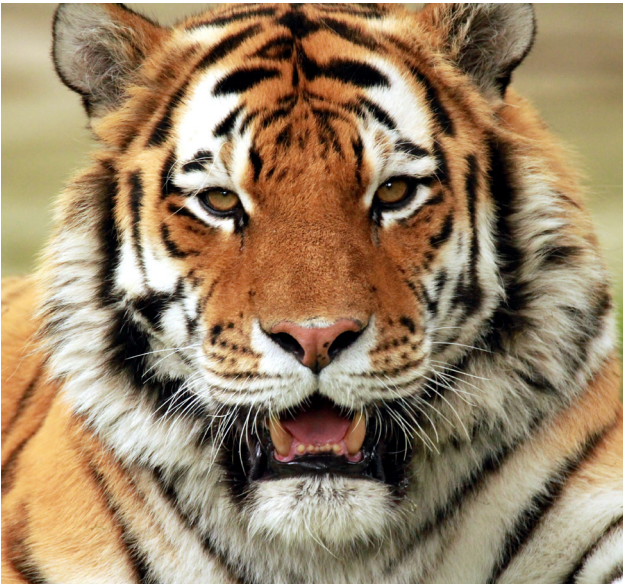
5. Where would you find groups of Guereza (also known as black and white colobus) monkeys?



Exploring the Saint Louis Zoo Scavenger Hunt



6. Spider monkeys are said to have a “fifth hand.” Observe the animal carefully, and see if you can draw a picture of one of them using this special appendage.



7. Lemurs and sifakas both inhabit this island. What is the name of this island?

Exit the front of the Primate House and go to your right, passing Primate Canopy Trails. You are on the edge of Big Cat Country.

Big Cat Country

8. As you look at each animal and read the information, write down where it’s from and whether or not it is threatened/endangered.

Animal	Continent	Threatened/Endangered (Yes/No)
A.) Lion		
B.) Snow leopard		
C.) Amur tiger		
D.) Amur leopard		
E.) Jaguar		

When you leave Big Cat Country, look for the zebras. They are part of Red Rocks (hoofed mammals area).

Exploring the Saint Louis Zoo Scavenger Hunt



Red Rocks (Hoofed Mammals Area)

9. Zebras can be distinguished by the stripe pattern on their hindquarters. Circle the stripe pattern below that most closely resembles the Grevy's zebra.



A.



B.



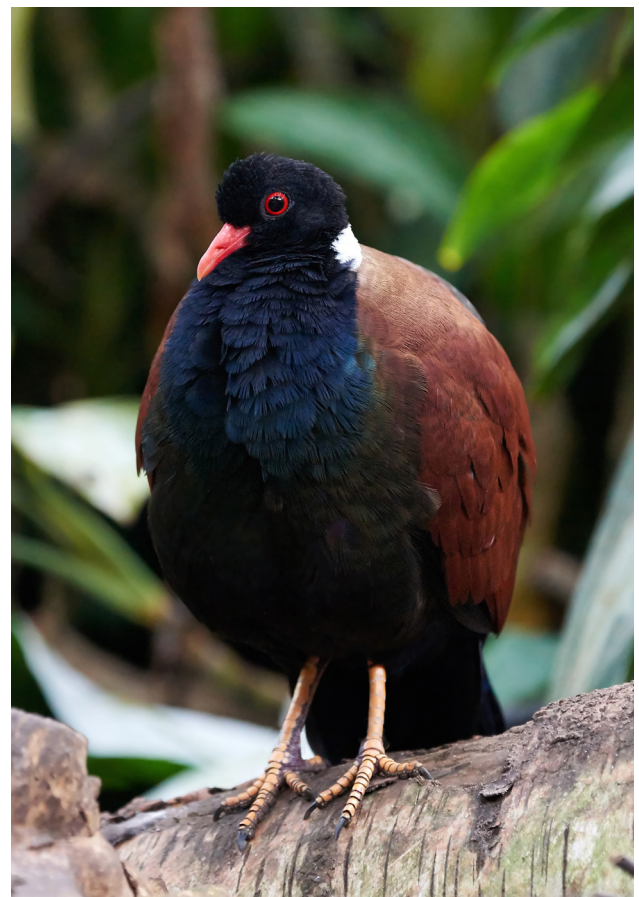
C.



D.

10. From which hoofed animal do we get the symbol for the Saint Louis Zoo logo?
- A. Giraffe
 - B. Transcaspian ural
 - C. Speke's gazelle
 - D. Lesser kudu
11. I have legs like a zebra, but I'm actually more closely related to a giraffe. Who am I?
- A. Okapi
 - B. Lesser kudu
 - C. Banteng
 - D. Bactrian camel
12. The giant panda lives in the bamboo forests of China. Observe the maps on the signs to find out which hoofed animal shares its habitat with the giant panda?
- A. Speke's gazelle
 - B. Takin
 - C. Banteng
 - D. Bactrian camel
13. Find the banteng. What is an easy way you can tell the male and female bantengs apart?

Leave the hoofed mammals area and head toward the Bird House.



Exploring the Saint Louis Zoo Scavenger Hunt



Bird House/Bird Garden/1904 Flight Cage

14. Where does the Micronesian (or Guam) kingfisher live?

15. What is the conservation status of this species?



1904 Flight Cage/ Cypress Swamp

16. In the 1904 Flight Cage, use the signs in the swamp to identify the birds. List three to five different species you were able to identify.

1. _____

2. _____

3. _____

4. _____

5. _____

As you leave the 1904 Flight Cage, follow the path that takes you through the Fragile Forest.

Fragile Forest

(Apes are housed indoors in the Jungle of Apes building during cold winter months.)

17. Using the signs and scrapbooks, list three things about apes that are new to you.

18. If you were one of the other great apes such as the chimpanzee, gorilla or orangutan, you would use your arms and legs to move along the ground. You might even “walk” on the knuckles of your hands. Observe one of the three different species and try it yourself!

